

EVERYSIGHT



E-Fitness

Touch Gestures

MAVERICK

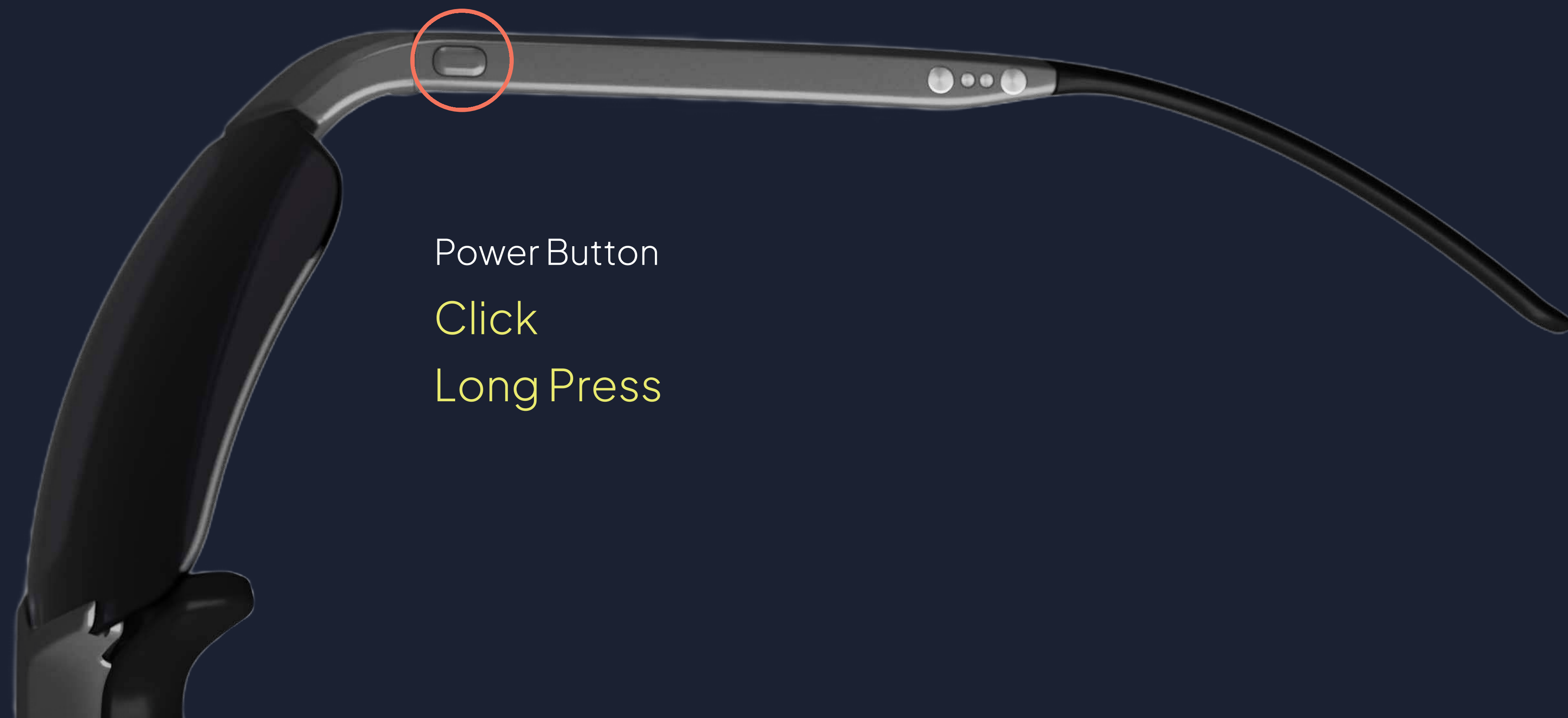


Touch Geasures

Tap | Long Tap

Swipe Forward | Swipe Backwards

MAVERICK



Power Button

Click

Long Press

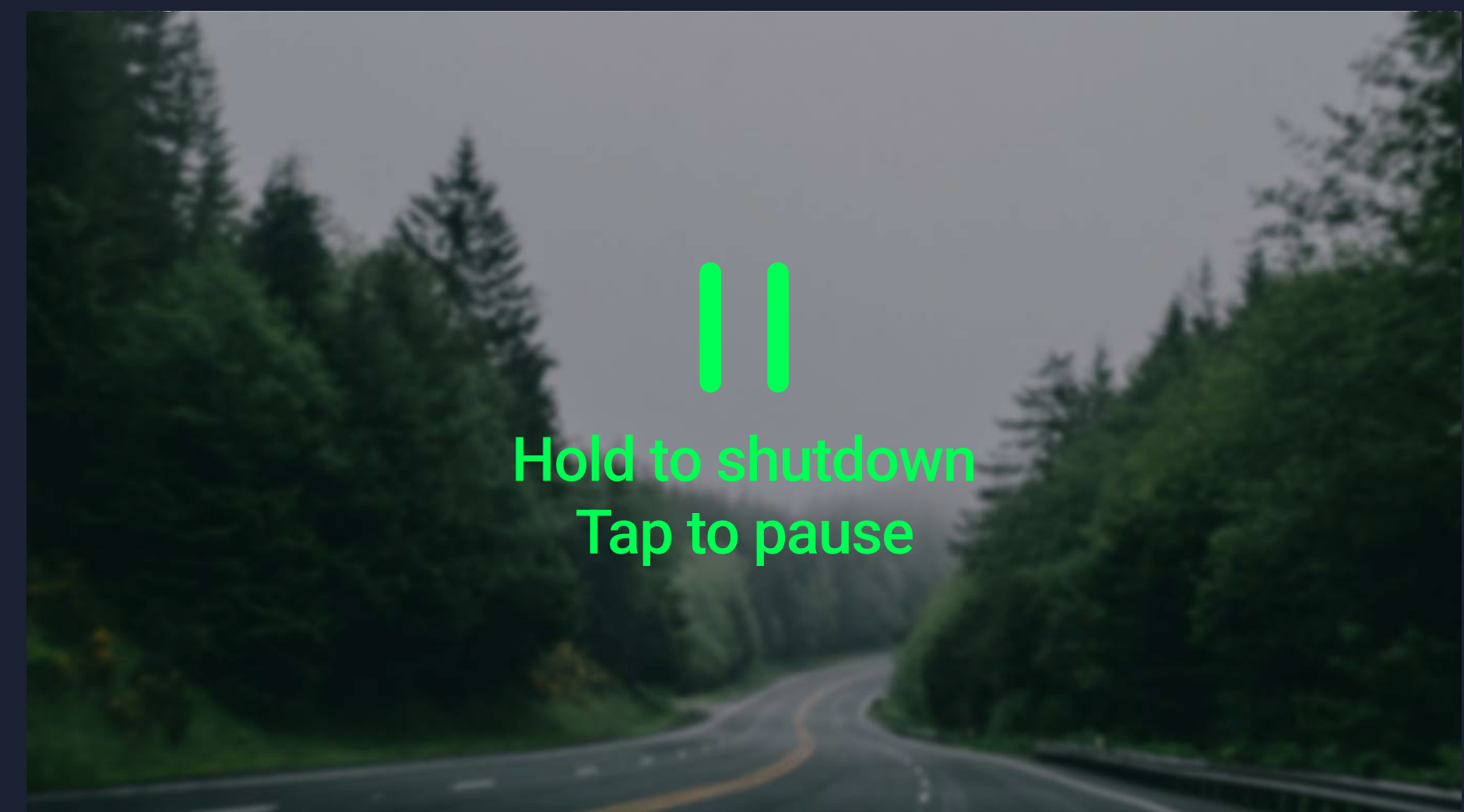
Global Gestures

Touch area **Long press**

- Opens brightness menu
- Swipe Fwd\Bwd changes brightness\auto brightness gain
- **Long press** on touch area while brightness menu is open toggles auto brightness on\off

Power button **Long press**

- Opens glasses shutdown dialog
- If an active ride exist – pause ride option also appears



During Ride

Tap

- Opens lap\zoom menu
- Tap again: makes a lap
- Fwd\Bwd: zoom in\out*

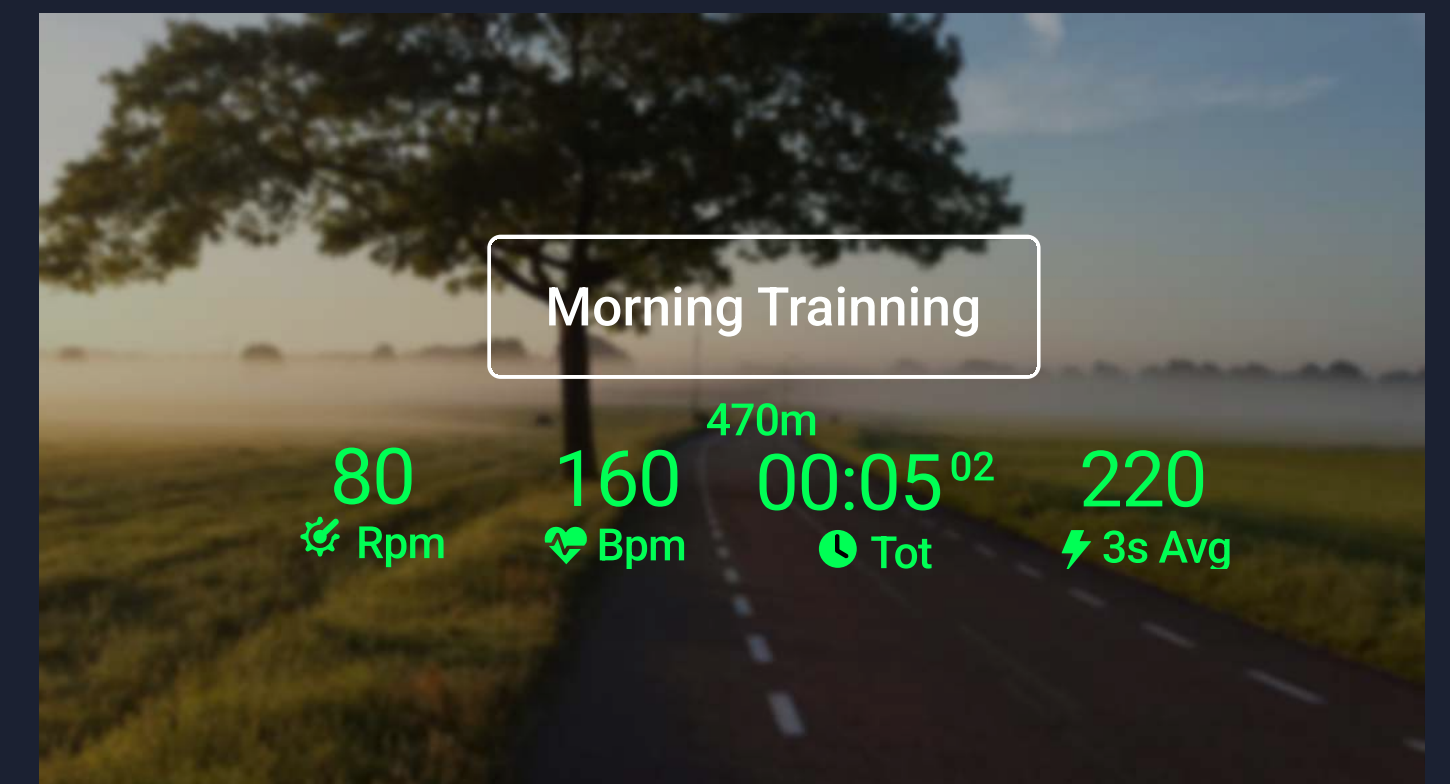
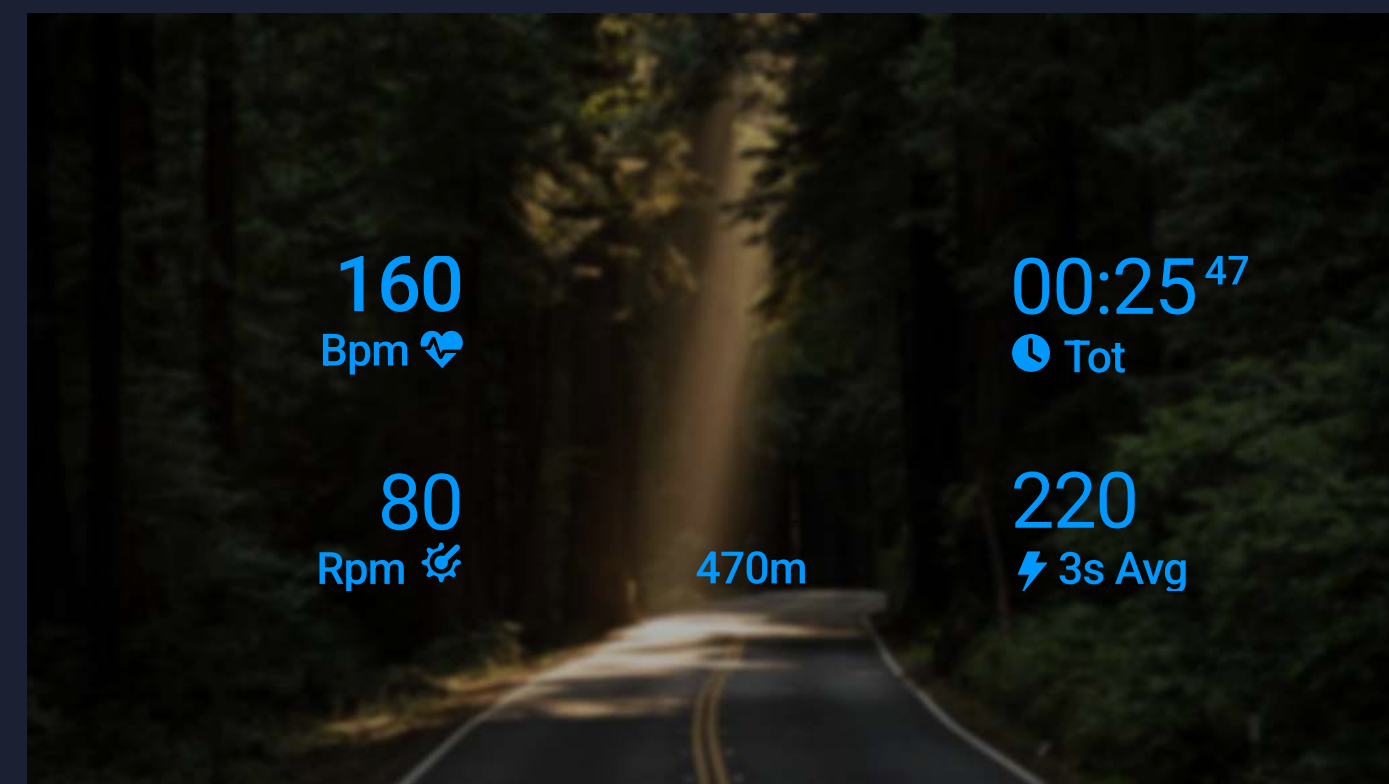
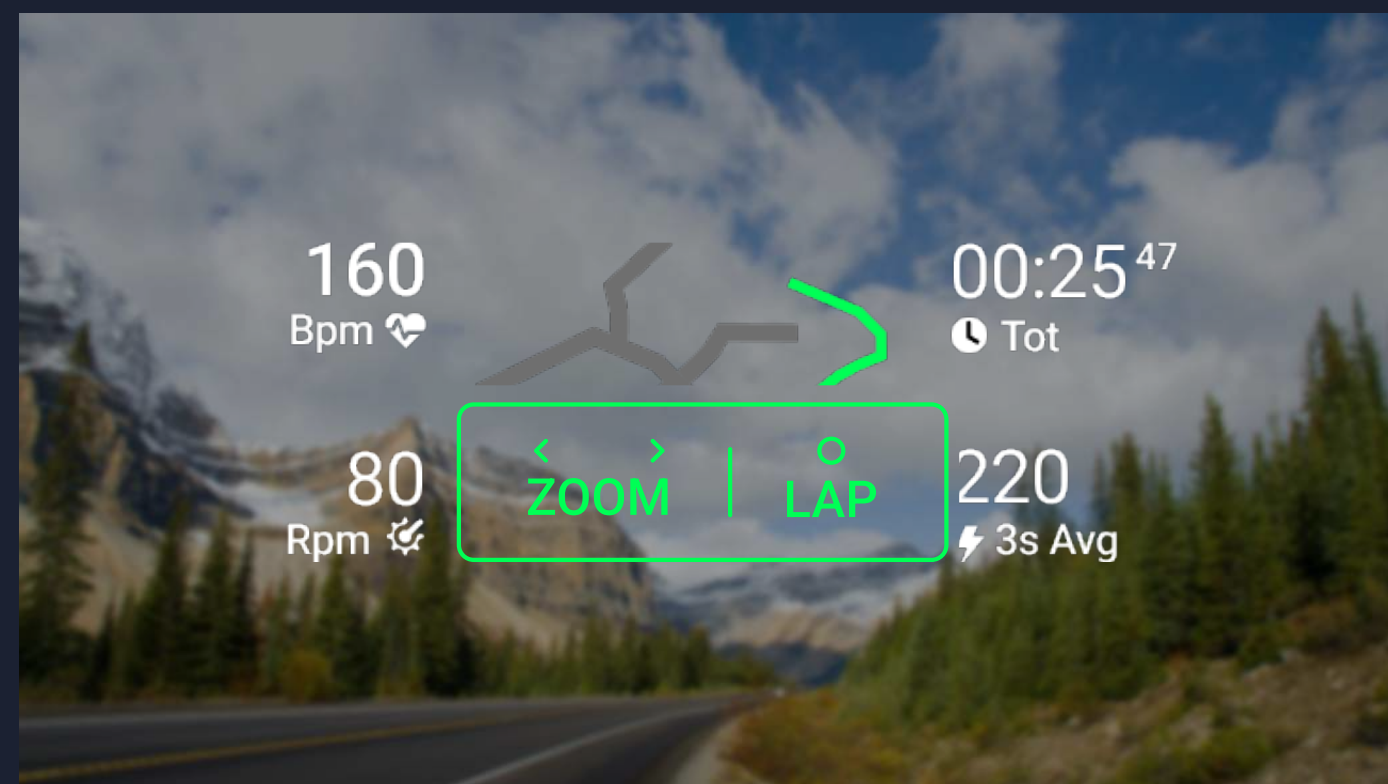
*Zoom is available only if the map or the elevation graph is displayed

Swipe Backward

- Toggles between map modes:
Empty, Route only, Full Map

Swipe Forward

- Next Ride Screen



ENJOY MAVERICK



The information, data, drawings and the like contained in this document are proprietary to Everysight and strictly secret and confidential, and are supplied with the understanding that they will be held secret and confidential. The disclosure by Everysight of information contained herein does not constitute any license or authorization to use or disclose information, ideas or concepts presented. No part of this document may be disclosed to any third party, copied, reproduced or stored on any type of media or used in any way by any party without the specific prior written authorization from Everysight, or their direct representatives. This document has been prepared on the basis of reasonable opinions and assumptions.